

Some distinctive flies at light-traps

Compiled by Martin Harvey for BENHS workshop Dec 2017



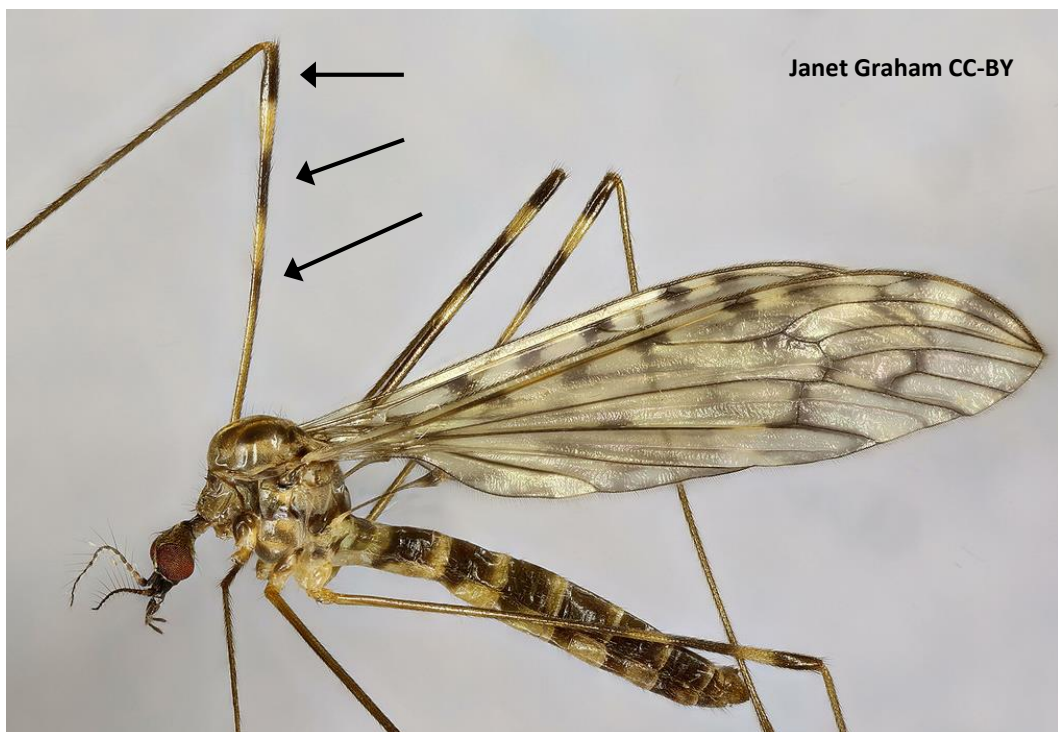
***Rhipidia maculata*, family Limoniidae (a crane fly)**

A small species with small dots speckled over the wings, and toothed antennae (very long teeth in male, shorter teeth in female shown here)



***Limonia nubeculosa*, family Limoniidae (a crane fly)**

Slightly bigger than the above species, with larger spots on the wings; the diagnostic feature is the presence of three dark bands on the front femora



Window gnats, genus *Sylvicola*

Small flies with many-segmented antennae, spots on wings and dark lines on thorax. Not easy to identify to species level but there is an [online key](#), and [photos from Steven Falk](#).



***Microchrysa polita*, Black-horned Gem soldierfly**

Very small fly, bright metallic green, with dark antennae, dark front femora and eyes not hairy (a larger green soldierfly with hairy eyes is likely to be *Chloromyia formosa*, the Broad Centurion)

